



For Models:

EZ60PT: firmware version 2

EZ59OD: firmware version 2

EASY INSTRUCTIONS: (From Set-up to Working Wireless!)

PLEASE USE THESE INSTRUCTIONS/THESE ARE MUCH EASIER TO UNDERSTAND!

- 1) Un-Package Your EZ Cam (be careful to NOT turn the Pan/Tilt cam with your hands!)
- 2) Screw the supplied antenna into the back of your camera.

(PLEASE make sure the nut on the male antenna connector at the back of the camera is tight, so that while screwing in your antenna it does NOT turn while you are attaching the antenna!)

The manufacturers sometimes do not tighten this nut enough. This could permanently damage your

camera!

3) Plug a Cat5 network cable into the back of your EZ Cam and the other end into your router.

4) Plug the EZ Cam into your power outlet with the (included) power supply cord.

5) Insert the installation disk (included with your EZ ip camera) NOTE: If for some reason you have lost or misplaced your installation disk, you may download the necessary software/manuals here: <http://www.ezsecuritycam.com/questions.htm>

6) INSTALL: OCX.exe (software) You can choose option: RUN

7) Download and Open: The IP Cam Tool, this tool is used to identify your camera over your network. Note: you will only need to use this IP Camera Tool when installing your camera or adding other cameras to your network)

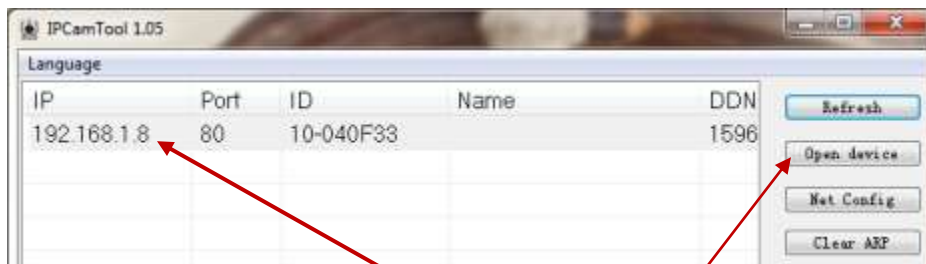
SPECIAL NOTES/INFORMATION ABOUT YOUR CAMERA:

Each EZ ip camera (Model: EZ60PT) has an identification label on the underside of the camera. This label informs you of the DNS address which can be used to login to your camera from outside of your network (ex: 55555.eipcam.com:81)

This label also includes the default camera user name: admin and password: admin

If you ever have to reinstall your camera or have forgotten the login or password you will also find the "RESET Button" on the underside of the camera. Just press this button for over 15 seconds and you will reset the camera back to the factory default settings.

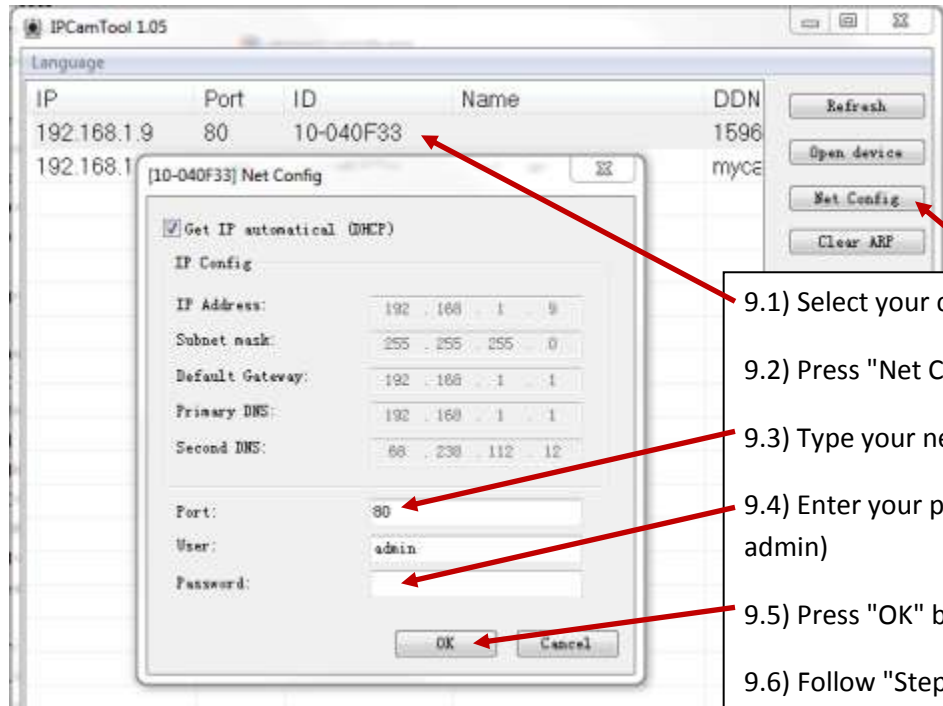
8) First try to access your camera by selecting it with your mouse and press the "Open Device" button. (SEE ILLUSTRATION BELOW)



8.1) Select your device.

8.2) Press "Open Device"

9) If your device does not open within your Internet Browser, change your default port number of your camera to one of these numbers: 80, 8080, or 8000. (SEE ILLUSTRATION BELOW)



9.1) Select your camera.

9.2) Press "Net Config" button.

9.3) Type your new port number in.

9.4) Enter your password (default: admin)

9.5) Press "OK" button.

9.6) Follow "Step 8" instructions above and see if you have access to you camera.

10) You should have successfully arrived at your camera's login screen. Now enter your user name and password.

You should enter:

User Name: admin

Password: admin

Press "LOGIN" button

11) You should see LIVE Video now, from your camera! (BUT wait, we have to continue to make it work wireless!)

(PLEASE NOTE: If you can't see LIVE Video at this point - Your ISP may be blocking Port # 80 - If this happens in your case, then go back to step# 9 above, and change the Port from 80 to 8080 or 8000)

On the Left-Hand side of your screen you should see +Net Connection, make this selection and next select *Wireless Connection, press the "Search WiFi Router" button.

Check the "ENABLE" checkbox to enable a wireless connection. Next, select your router in the above-screen listings of available wireless networks.

This should automatically populate the "WiFi Router:" name field. Next, type your routers' WiFi Encrypted password. Finally press the "SAVE" Button at the bottom RH Corner of the page.

NOTE:

Here, it is very IMPORTANT to set your ENCRYPTION correctly or your camera will not be recognized by your wireless network! (in some instances, you may have to login to your wireless router and change it to "Broadcast" your SSID Name)

12) Make a note of the LAN IP address and your port number of your camera (this can also be found on the "IP Camera Tool" software).

12.1) UN-Plug the power adapter from your camera.

12.2) UN-Plug the CAT5 Network cable from your camera.

13) Plug in the power adapter cable ONLY. (Maybe plug-in the camera in another room) (Time to go wireless!)

13.1) Open your Internet Browser and type in the appropriate IP Address of your camera.

EXAMPLES:

WITH-IN your network: <http://192.168.1.X:80> or <http://192.168.1.XX:8080>

OUTSIDE your network (use the DNS address on the label from the bottom of your EZ Camera):
<http://xxxxx.eipcam.com:80> or example: <http://55555.eipcam.com:8080>

NOTE: If you have multiple cameras you will have to learn how to use a "Static IP" Address (Non-DHCP) and you will need to learn how to "Port Forward" (specific ip camera port numbers through your wireless router) You can learn more about static IP addresses and Port Forwarding through searching on the internet or visit: <http://internetcamerahelp.com> for Video Tutorials.

CONGRATULATIONS!

For more HELP refer to your owner's manual that is included within your package or refer to:

<http://www.ezsecuritycam.com/questions.htm>