



EASY INSTRUCTIONS: (From Set-up to Working Wireless!)

Instructions made exclusively for EZ59 models, but are similar to EZ63 models.

PLEASE USE THESE INSTRUCTIONS/THESE ARE MUCH EASIER TO UNDERSTAND!

1) Un-Package Your ezCam (be careful to NOT turn the Pan/Tilt cam with your hands!)

2) Screw the supplied antenna into the back of your camera. **(PLEASE make sure the nut on the male antenna connector at the back of the camera is tight, so that while screwing in your antenna it does NOT turn while you are attaching the antenna!)** the manufacturers sometimes do not tighten this nut enough. This could permanently damage your camera!

3) Plug the Cat5 network cable (included) into the back of your ezCam and the other end into your router.

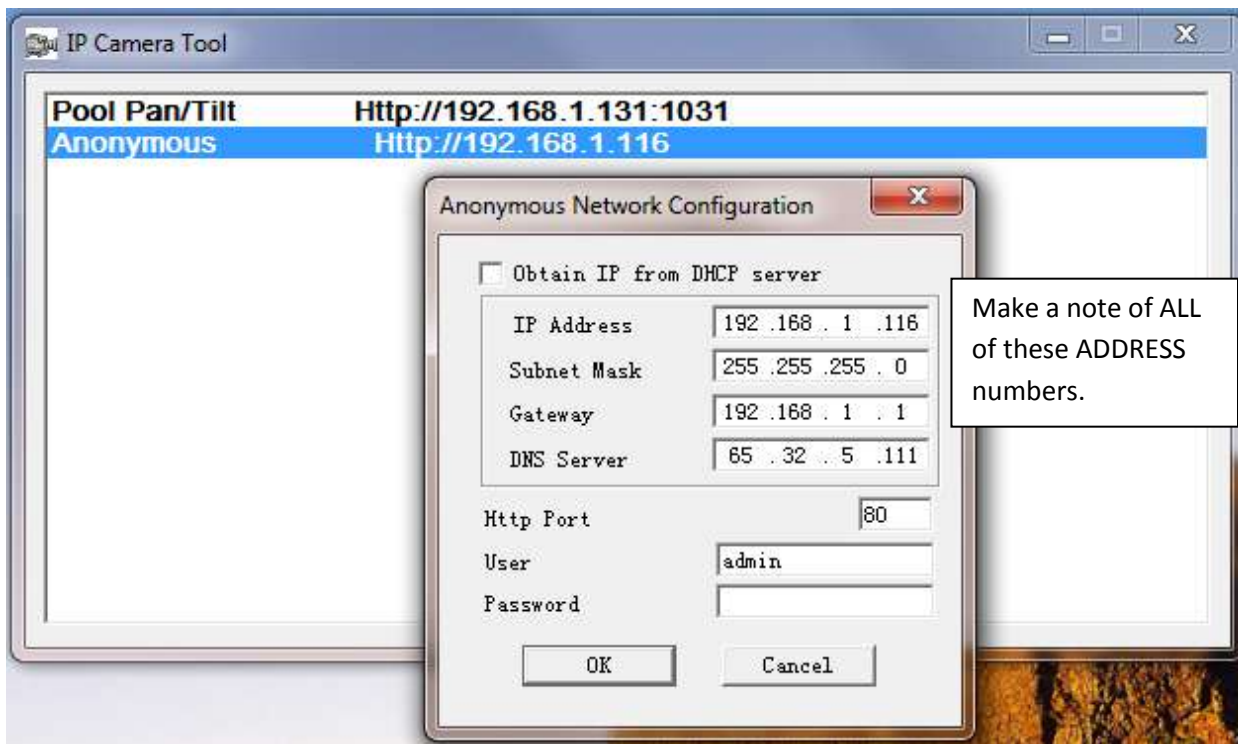
4) Plug the ezCam into your power outlet with the (included) power cord.

5) Log into your computer Internet Browser. Go to: <http://www.ezsecuritycam.com/questions.htm>

6) Download: [IP Cam Setup Tool](#) (software) You can choose option: RUN

7) Start the IP Camera Tool and do what is says in the illustration below!

"RH Click" on your camera when you see it appear.



8) With the camera still hooked up (wired) open your Internet Explorer and enter the IP Address of your camera. We'll use the example of the illustration in step #7 above. Enter it like this:

example: **http://192.168.1.116**

9) You should have successfully arrived at your camera's login screen. Now select the SIGN IN (ActiveX Mode). You should enter:

User Name: admin

Password: (none, leave blank)

Press OK or LOGIN

10) You should see LIVE Video now, from your camera! (BUT wait, we have to continue to make it work wireless!) SELECT the tab that is labeled: For Administrator **(PLEASE NOTE: If you can't see LIVE Video at this point - Your ISP may be blocking Port# 80 - If this happens in your case, then go back to step# 7 above, and change the Port from #80 to #8080)**

11) Now that you are in the Administrator page, you should make correct settings within all of the option tabs. (But we will review the necessary ones to get you operating wirelessly) you can always go back later and complete the details.

12) Select the "Basic Network Setting" tab. Complete the instructions as described in the illustration below!

For ADMINISTRATOR

Basic Network Settings

Obtain IP from DHCP Server **UNCHECK the DHCP Box!**

IP Addr: 192.168.1.116

Subnet Mask: 255.255.255.0 **CHOOSE**

Gateway: 192.168.1.1

DNS Server: 65.32.5.111

Http Port: 80

Submit Refresh

Then press **SUBMIT**

Enter all of these boxes with the information that you got from your IP Camera Tool (Software)

- Device Info
- Alias Settings
- Date & Time Settings
- Users Settings
- Multi-Device Settings
- Basic Network Settings
- Wireless Lan Settings
- ADSL Settings
- UPnP Settings
- DDNS Service Settings
- Mail Service Settings
- Ftp Service Settings
- Alarm Service Settings
- Decoder Settings
- Upgrade Device Firmware
- Backup & Restore Settings
- Restore Factory Settings
- Reboot Device
- Log
- Back

13) Select the "Wireless Lan Settings" tab. You can choose the Scan button and try to find your wireless network (try this first) or follow the instructions in the illustration below!

Wireless Lan Settings

Wireless Network List

Scan

Using Wireless Lan **Check-Mark this!**

SSID: **Enter your wireless router's SSID**

Encryption: **Select your wireless router's Encryption type, then enter password/share key**

Submit Refresh

CHOOSE

PRESS SUBMIT When ALL Done

- Device Info
- Alias Settings
- Date & Time Settings
- Users Settings
- Multi-Device Settings
- Basic Network Settings
- Wireless Lan Settings
- ADSL Settings
- UPnP Settings
- DDNS Service Settings
- Mail Service Settings
- Ftp Service Settings
- Alarm Service Settings
- Decoder Settings
- Upgrade Device Firmware
- Backup & Restore Settings
- Restore Factory Settings
- Reboot Device
- Log
- Back

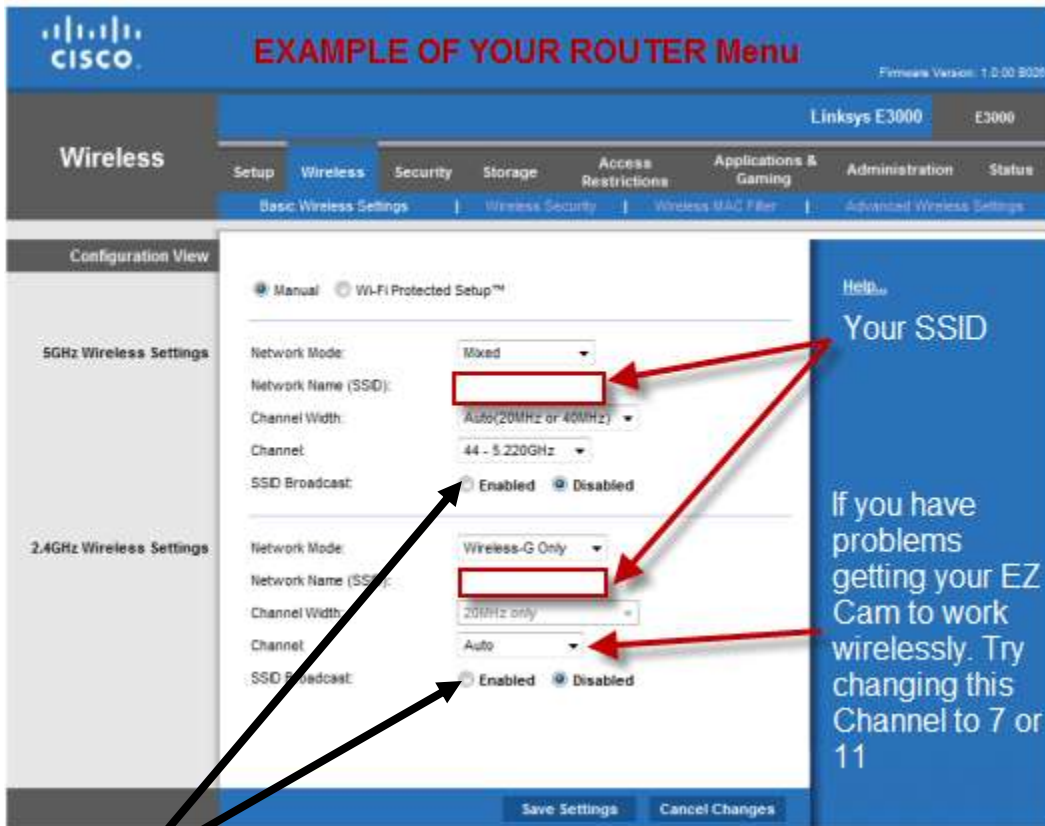
NOTE:

Here, it is very IMPORTANT to set your ENCRYPTION correctly or your camera will not be recognized by your wireless network!

14) Now un-plug the power cord from your camera, un-plug the CAT5 network cable from your camera. **We're going wireless, NOW!** Make sure your antenna is screwed into the back of your camera and plug your camera into a power outlet across the room somewhere (**no network CAT5 cable** connected!). As your camera powers-up, you will see the GREEN light near the front lens start to activate (it will start to BLINK - after about

60 seconds). This light is your camera network connection light, NOT a power indicator light! (**NOTE: some model cameras DO NOT have this green indicator light**)

NOTE: If the activation, GREEN light does not start to blink or - if your camera is not equipped with this indicator light and you still cannot see video through your camera - you should go back to step #1 and review ALL steps thoroughly to make sure you have the proper settings. Most likely it is within your router security settings or possibly your router channel settings. Refer to the illustration below for an example of your typical wireless router menu:



Another IMPORTANT NOTE: If you still cannot access your camera wireless at this point, we have found that you **MUST "Broadcast" your SSID** and make **SURE** your wireless router is set to wireless b/g network mode, **NOT** wireless N-only.

15) Open your Internet Explorer and enter the IP Address of your camera. We'll use the example of the illustration in step #7 above. Enter it like this:

example: **<http://192.168.1.116>**

If you have reached the camera login screen you have successfully set-up your camera to work wirelessly!

CONGRATULATIONS!

For more HELP refer to your owner's manual that is included within your package or refer to: <http://www.ezsecuritycam.com/questions.htm>